

**Finsa**



Textured  
Panels

Habitat  
**360**





The image shows several rectangular wooden blocks of varying sizes and finishes. One block in the foreground has a dark, vertical wood grain. Another block in the background has a light-colored, herringbone or chevron pattern. The blocks are set against a background of a similar herringbone pattern. The text 'Table of contents' is overlaid in white on the upper right portion of the image.

# Table of contents



**1.**  
Sustainability  
(Pg. 6)

---

**2.**  
Fibrapan Tex  
(Pg. 13)

---

**3.**  
FibraPan® Natur Tex  
(Pg. 21)

---

**4.**  
Accessories  
(Pg. 31)

---

**5.**  
Technical recommendations  
(Pg. 34)

# Finsa

**Finsa**, a company supported by over ninety years of experience, has been a pioneer in the transformation, development and manufacture of wood-derived products. In connection with the environment, Finsa continues to work to respond to the needs of the interior design and construction market, ultimately helping to create the spaces we will inhabit in the years to come.

Over the years the company has advanced, never losing its essence but adapting to changing times, with sustainability as a core value and design as its vision for the future. The transformation process to which the raw material is subjected ensures that the wood does not lose its properties; rather, efficiency is improved through an industrial process based on the circular economy system.

Design is part of **Finsa's** DNA — not only as a core element in the creation of its products, but also as one of the brand's key strengths and defining features.

# Connect with Finsa

## Finsa.com

a website with all  
the information

**Finsa  
Room Visualiser:**  
compare and choose  
to your liking

**Sample service:**  
however and whenever  
you want

**Technical  
Consultancy  
Support:**  
we are part  
of your team

The **Finsa** website is a practical and intuitive tool that gives you quick access to detailed information about our extensive product range, including technical datasheets, catalogues, and availability guides. It also helps you locate your nearest distributors and stay up to date with the

latest news from **Finsa** and the wider industry. What's more, architects, designers, and interior professionals can find inspiration on the site through a curated selection of projects featuring our materials.

Making interior design decisions and advising your clients on trends has never been easier: compare different designs from our range on your screen in the **Finsa** Room Visualiser.

How does our Room Visualiser work? Using the "*Comparison*" mode allows you to display two settings in the same room configuration

at the same time. The detailed view allows you to see the effect of the design on the corresponding finish. Do you need to use and share those results outside our digital generator? You can create a report with all the details of the materials sampled for each setting.

Why imagine, when you can see for yourself? We can provide samples of our decorative surfaces, allowing you to discover their wide variety. If

you'd like to see them in greater detail before making your final decision, simply ask for our samples in A4 size.

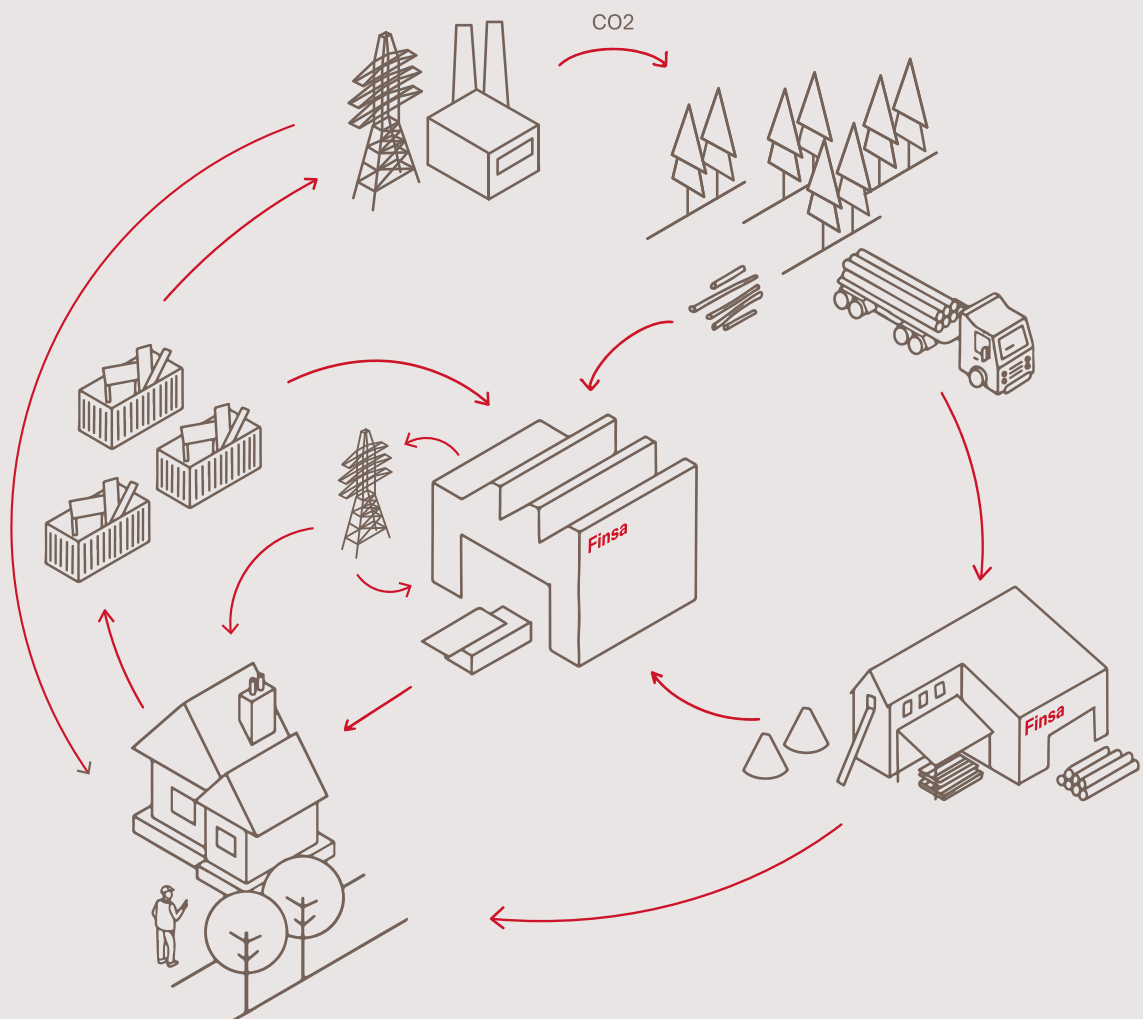
Finsa's Technical Consultancy team comprises professionals with extensive experience in architecture, interior design, and project development. Their job will be to accompany you during your projects to advise you on wood solutions. We can offer recommendations regarding partners who can support the execution

of the work, such as specialised distributors, industrialists and installers. In addition, we work on portfolios and other tools where we compile projects that use our materials, demonstrating the applied products and aiming to inspire you in your own work.

# 1. Sustainability

Finsa's technical wood is made using wood from rapidly renewable and recycled species. Finsa's commitment to sustainable growth extends beyond the boundaries of our factories. We consider it an obligation to respect and protect our primary raw material: wood.

For this reason, the development of the environment closest to our work centres and the people who live there is a commitment that we work towards every day.



## Product-related certifications



### Environmental Product Declaration

Document that communicates the environmental impact of a material during its life cycle, from the raw material extraction process, transport to the manufacturing plant and product manufacturing process.



### Cradle-to-cradle.

Multi-attribute certification, directly linked to Sustainable Development Goals (SDGs), demonstrating that a product is safe and circular.



### Product Transparency — Declare

Voluntary disclosure programme that makes product ingredients 99.9% explicit. The Declare seal aims to transform the building materials industry, aiming for healthier products through transparency.



### HPD Health Assessments

A Health Product Declaration (HPD) is a document shared by manufacturers to disclose a product's ingredients and associated health hazards.



### The Material Health Certificate

This is a materials analysis based on the Cradle to Cradle standard health assessment methodology. This certification seeks to promote healthier and safer products.



### Ecolabel

Voluntary seal of environmental excellence for products or services, created by the European Union in 1992. It ensures that high ecological standards are met throughout the life cycle. Our laminate floors are currently certified.

## Forestry certification, supply chain and transparency



### Forestry Certifications

#### PEFC

PEFC chain-of-custody certification provides a verified and independent guarantee that products with the PEFC label contain certified forest material from sustainably managed forests.



#### FSC®

We have implemented a PEFC/FSC® chain of custody certification system that allows us to supply certified wood products to customers which are 100% recyclable and contribute greatly to the fight against climate change. This forestry certification promotes certified wood, and to this end we certify our farms and help our suppliers achieve certification.



#### EUTR

As a sign of transparency, we voluntarily certify compliance with EU Regulation 995/2010 regarding the legal origin of wood.



#### ISO 38200

This is an internationally recognised standard for the transmission of information along the supply chain of wood and wood-derived products.

## Sustainable building certifications

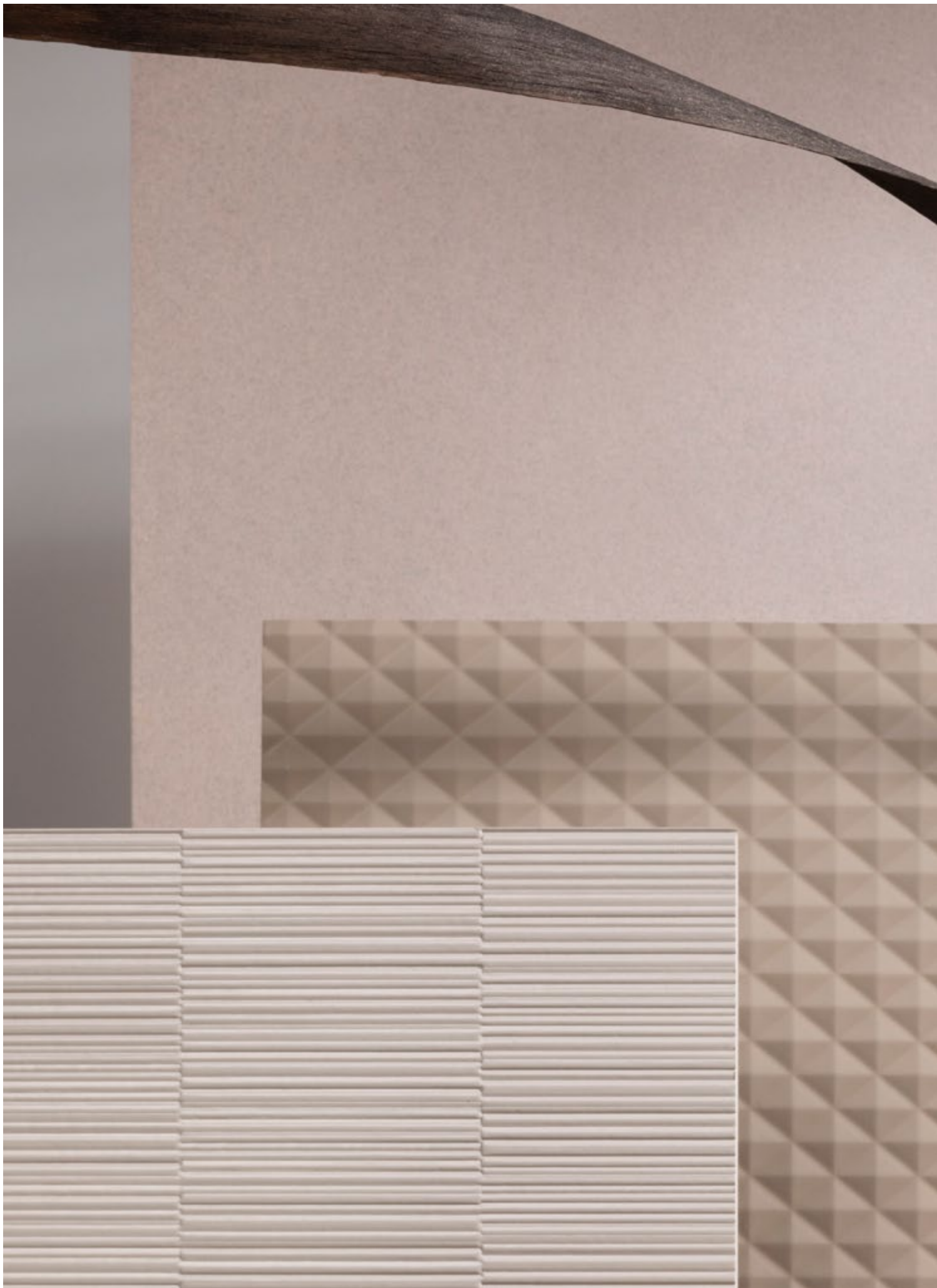
### BREEAM, LEED, VERDE, WELL and LBC

Our wood solutions help meet the requirements of sustainable building certifications.





For detailed information on the certifications applicable to each product, please do not hesitate to contact us.



The textured panels  
have a deep texture on  
the upper side.

They can be bare to be  
lacquered, coated with a  
natural veneer...

An infinite world of  
possibilities to create  
unique spaces!





With the Tex textures sculpted on the upper face of the panel, there are still new possibilities to create varied and unique interior spaces, endowed with personality and identity.

To help your creativity, eight patterns in linear, geometric or abstract shapes open the way to numerous combinations and almost infinite lacquering possibilities.

Hypertextures can also be applied to natural wood veneer. The combination of the embossed finish and the authenticity of the wood brings warmth, plays of reflections on the wood, and a multitude of options for high quality original creations.





## 2. FibraPan® Tex

Fibrapan® Tex is born from the combination of a wood fibreboard with the technology that allows an embossed texture to be applied on the surface. The eight texture designs -*linear, geometric or fantasy* -and the option of applying any varnish, lacquer or coating with membrane press foil give rise to infinite decorative possibilities and the personalisation of spaces at the highest level, playing both with colours (*RAL, NCS, Pantone*) and effects.



FibraPan® EZ Tex Prisma

El Hub del Espanyol  
Marina Pinós Interiorista

## Characteristics

FibraPan® EZ Tex is a textured board solution specially designed for lacquering, coating or varnishing. This offers a wide possibility of customisation for any type of project and need.

The use of this type of board also implies the consequent savings in surface machining processes and time to obtain similar results. All boards synchronise the reproduction of textures over the entire surface, which facilitates cutting, machining or panelling in different applications. In addition, there is also synchronisation of textures between boards, which makes it very easy to use different panels for the same project.

---

### Advantages



Customisable



Ease of machining and installation



Low formaldehyde emissions

---

### Accessories



Aluminium profile

### Applications

Fibrapan® EZ Tex is an ideal product to be used in different applications:

- **Interior furnishings**  
Beds, auxiliary furniture, display stands...
- **Passage and technical doors**  
Door facings
- **Bathroom furniture**  
Furniture fronts
- **Horizontal and vertical claddings**  
Decorative panelling, false ceilings...
- **Partitioning of spaces**  
Fixed and movable technical partitions.

---

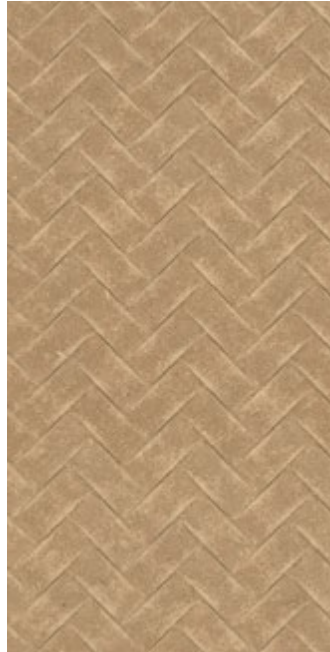
### Certifications



The mark of responsible forestry

-  
**Yute**

NEW



-  
**Cannettato**

NEW



-  
**Carved**

NEW



-  
**Fuji**



The Prisma, Mojave and Yute designs have texture synchronisation, which makes it easy to use different panels for the same project.

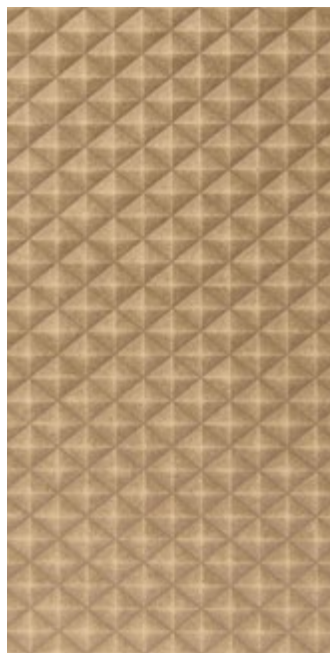
-  
**Mojave**



-  
**Flute**



-  
**Prisma**



-  
**Pirámide**



The Prisma, Mojave and Yute designs have texture synchronisation, which makes it easy to use different panels for the same project.



FibraPan® EZ Tex Carved

**New**





FibraPan® EZ Tex Flute



# 3. FibraPan® Natur Tex

The combination of natural wood veneer with the application of embossed finishes on the surface has resulted in FibraPan® EZ Natur Tex, a board that combines the warmth and naturalness of wood with a surprising finish resulting from technological innovation. This board is coated on both sides with the same species of wood, offering dimensional texture on the upper side. It uses selected natural wood veneer, which is suitable for use in luxury decoration, furniture fronts, panelling, etc. The reverse side uses veneer from the same species as the engraved surface, with a more varied and irregular structure.



FibraPan® EZ Natur Tex Roble Rigato Yute

New



## Characteristics

The technology used to reproduce reliefs on the surface of the board provides an ideal surface for the subsequent application of varnishes or oils.

The texture is applied on two veneers from our Studio Natur range, Roble Rigato and Nogal Merlot, which allows for easy combination in fronts or panelling within the same project.

In all cases, these sheets are joined using the splinting technique, which stands out for the combination of sheets with different structures and widths, giving a certain movement to the whole, and allowing for relative homogeneity between adjacent panels. A natural, modern look is achieved with certain variations in tone and structure, typical of a solid wood composition.

Tone variations between veneer sheets on the same face may become more noticeable after varnishing, resulting in increased contrast which is often perceived as less attractive. As this is a natural wood product, such differences are inherent to its character and should not be considered grounds for rejection.

---

## Accessories



Aluminium profile



Natural wood edge bandings

---

## Advantages



Customisable



Ease of machining and installation



Low formaldehyde emissions

## Applications

FibraPan® EZ Natur Tex is an ideal product for use in different applications:

- **Interior furnishings**  
Beds, auxiliary furniture, display stands...
- **Passage and technical doors**  
Door internal facings
- **Bedroom furniture**  
Furniture fronts
- **Horizontal and vertical claddings**  
Decorative panelling, false ceilings...
- **Partitioning of spaces**  
Fixed and movable technical partitions.

---

## Certifications



The mark of responsible forestry



## Roble Rigato

Linear mix matched composition made with care by expert hands starting from the best selected European oak veneer cut along with the grain.

—  
**Roble  
Rigato  
Mojave**



—  
**Roble  
Rigato  
Cannettato**

**NEW**



—  
**Roble  
Rigato  
Fuji**



The Mojave and Yute designs have texture synchronisation, which makes it easy to use different panels for the same project.

—  
**Roble  
Rigato  
Flute**

**NEW**



—  
**Roble  
Rigato  
Yute**

**NEW**



—  
**Roble  
Rigato  
Carved**

**NEW**



The Mojave and Yute designs have texture synchronisation, which makes it easy to use different panels for the same project.

## Nogal Merlot

American walnut veneer with a quarter-cut structured and mix matched jointing technique, trying to highlight the natural sinuosity of the grain of this noble wood.

It allows the presence of certain characteristics typical of walnut, such as slight contrasts of darker veins or small natural reflections that make it a design that surprises with its elegance.

—  
**Nogal  
Merlot  
Mojave**



—  
**Nogal  
Merlot  
Cannettato**

**NEW**



—  
**Nogal  
Merlot  
Carved**

**NEW**



The Mojave and Yute designs have texture synchronisation, which makes it easy to use different panels for the same project.





FibraPan® EZ Natur Tex Roble Rigato Mojave

House renovation  
Antonio Rodríguez Horche

**New**

FibraPan® EZ Natur Tex Nogal Merlot Cannettato





Natural wood edge

# 4. Accessories

## Natural wood edges

---

To finish your projects, Finsa offers edges to match our Natural Decorative Surfaces.

This complete solution allows you to take care of even the smallest details.

Natural wood edges, sanded, unglued, thickness 1mm, width 23mm.  
100 ml rolls.

## Aluminium profiles

---

Bronze-coloured aluminium profile that allows the edges of the board to be finished.

T- and H-profiles are available.



Aluminium profile





# 5. Technical recommendations

---

## General recommendations

---

### Storage conditions

---

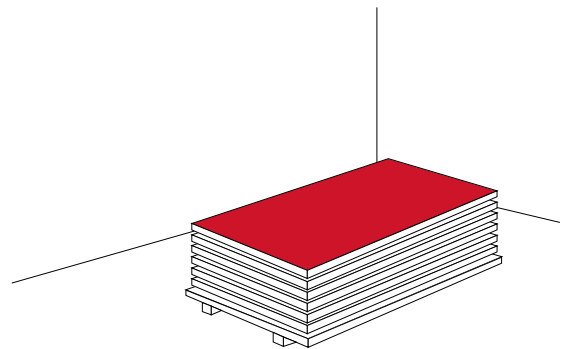
It should be stored in closed, ventilated and dry premises, protected from sun, rain, frost and chemical splashes, in compact piles.

The packages should be placed on a level and flat surface, **avoiding direct contact with the ground and water** and maintaining the distances between the battens supplied with the packaging so as to avoid swelling, bending and deformation.

When the packages are stacked, vertical alignment **of the boards is recommended** to avoid deformation. The boards should be kept packed in conditions similar to those of the original packaging in order to maintain their properties. **It is recommended that you retain these boxes to keep the engraved surface in good condition.**

Try to avoid subjecting the sides of the board to differing humidity and temperature conditions.

It is advisable to pay special attention to dry and side impacts, and to handle the board with care to avoid damage.

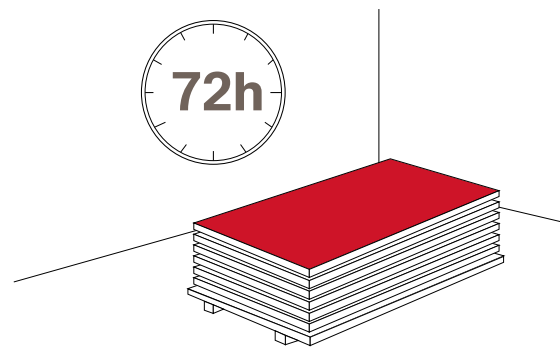


## Conditioning

---

Due to its hygroscopic properties, wood and any form of board derived from it will capture and release humidity from the surrounding environment, which may cause dimensional variations depending on the temperature and humidity conditions of that environment.

Pre-conditioning of the boards is recommended. Before processing, it is advisable to **acclimatise it to the environment for at least 2 days before use**. In the case of on-site installation (cladding, etc.), **they must be stabilised at the installation site** to achieve balance and minimise dimensional variations once installed.



## Handling and cutting

---

For the cutting and machining of the board, the tools normally used for other wood-based boards shall be used. For a good result, it is important to ensure correct sharpening and maintenance of the cutting tools as well as the elimination of vibrations in the machine, and to follow other good practices recommended in carpentry work. It is recommended that you consult your usual tool supplier for further information and advice.

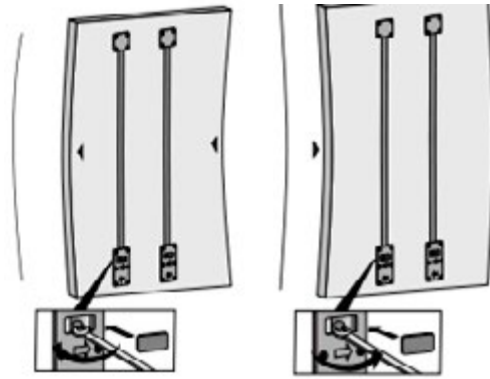
The product must be handled with due care, **avoiding intense friction between the faces that could cause damage to the decorative surface**. We recommend that you machine the edge of the board, avoiding straight edges.

## Flatness correction

---

As it is an asymmetrical product, and stamped on one side only, we cannot guarantee warpage values.

Therefore, for door applications with large sections where the lengths exceed 1 m, and for thicknesses of less than 26 mm, vertical tensioners are recommended both for doors that are subsequently mounted in a sliding or folding system, and for hinged swing doors. This must always be done per door or front, with 2 straightening fittings.



For further details please consult your hardware manufacturer's recommendations.

## Cleaning

---

Prior to finishing, the surfaces must be free of dust or dirt and sanding marks.

Before finishing, it is desirable to rub lightly with a scotch or sanding pad to remove any dirt or imperfections resulting from the process, and then blow with plenty of pressurised air.

The backing on FibraPan® EZ Natur Tex is supplied pre-sanded, which requires a finer grit sanding prior to finishing.

## Finishing treatment

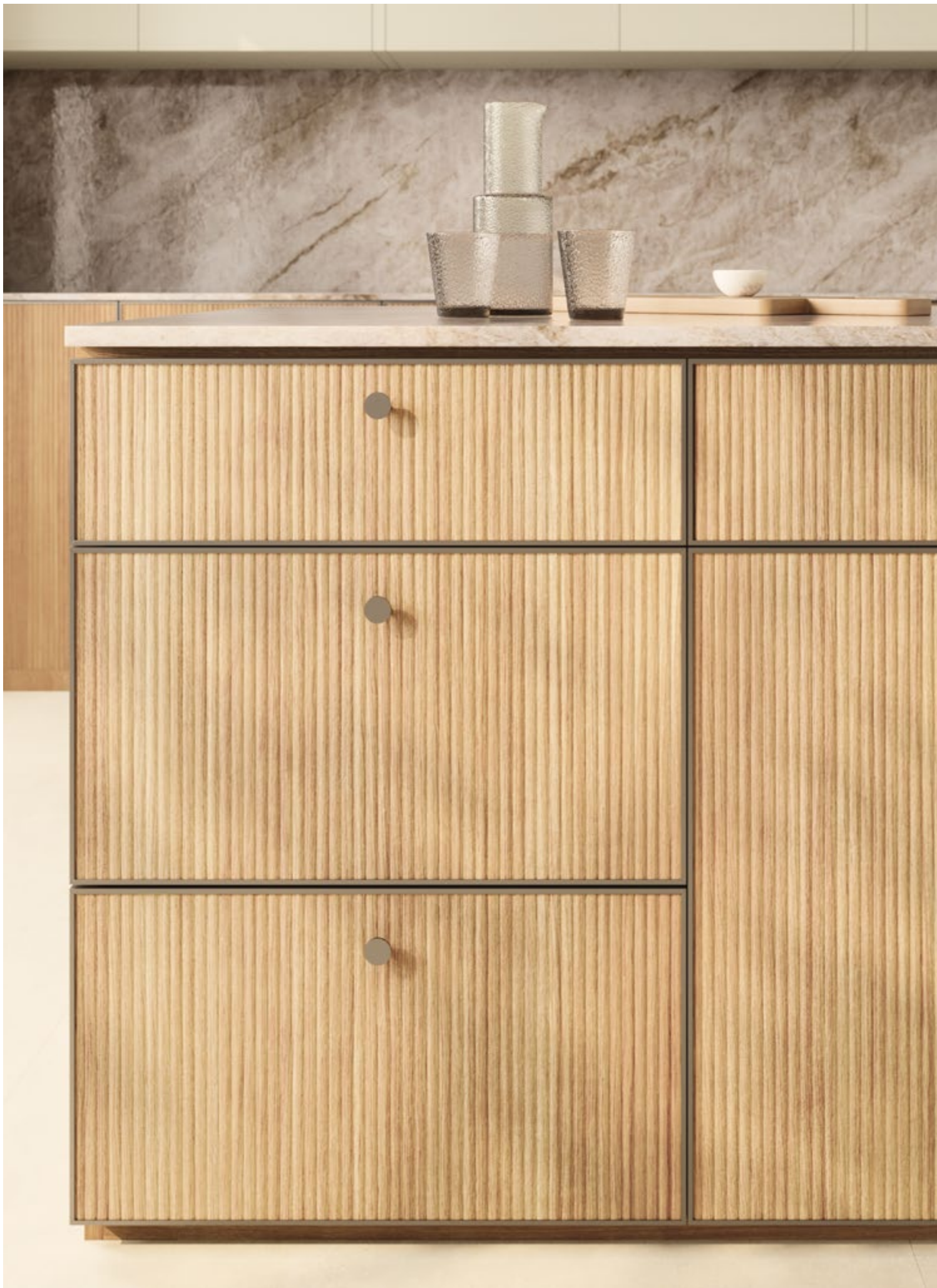
---

Due to their hygroscopic behaviour, the boards may admit and pick up moisture from the surrounding air or nearby elements, which is why it is very important to **acclimatise them beforehand at the installation site** and to leave expansion joints around the perimeter of the board once they are installed on-site (in the case of panelled products.)

The method of installation and fastening is critical to ensure proper performance of the panels on-site.

We offer for this range, two aluminium profiles that provide an elegant and simple finish for edges or panelling. These profiles make it easy to finish the workpieces quickly and conveniently, either with the T-profile for 4-sided end caps or with the H-profile for panelling.





# FibraPan<sup>®</sup>

## EZ Tex

---

### Features

---

Textured MDF boards, due to their manufacturing process, may present variations in tone, not guaranteeing homogeneity on the same face, between faces of the same board and between different productions.

It is therefore recommended:

- To use boards from the same production batch.
- Before use, conduct a comparison between boards of the same or different thicknesses to check their shade.

In the case of mass-coloured boards, highly resistant natural pigments are used in their production, but direct exposure to sunlight should be avoided in order to prevent colour changes.

### Edgebandings

---

Edge sealing is recommended to guarantee the good behaviour of the board.

In the case of transparent pigmented finishes, there may be a slight variation in tone between the surface of the board and the edges due to greater absorption in the latter; the edge sealing mitigates this effect.

## Finish

---

The textured MDF board is supplied unfinished, therefore the application of a surface treatment to protect the surface is recommended.

When a surface treatment (varnish, oil, waxes, etc.) is to be applied, we recommend carrying out a preliminary test on a representative sample to check the compatibility of the coating with the board. It should be taken into account that transparent finishes can change the initial tone of the board, making it darker.

We recommend the use of a sealing product before applying the surface treatment. Water-based products with high water content can affect the substrate causing unwanted fibre repellency. In these cases, it is recommended to apply a solvent-based insulating primer and then continue with the water-based finishing process.

Before giving the final finish, and after the primer, for an optimal aesthetic result and silky to the touch, it is desirable to rub lightly with a scotch, sanding pad or flexible brush roller to remove possible dirt or surface imperfections resulting from the process, and then blow with plenty of pressurised air.

In the case of FibraPan® Tex Cannettato, due to the design of the texture itself, this sanding is required prior to the final finish.



# FibraPan® EZ Natur Tex

---

## Features

---

FibraPan® EZ Natur Tex is a veneered board with dimensional texture on one side. The back of the board is completely smooth, like a normal veneer.

The qualities of the veneers applied on both sides are different:

The engraved surface (face): Plus quality veneer (Finsa code 033) suitable for use in high decoration, furniture fronts, panelling, doors, etc. is used. This veneer is presented with a splint jointing type that combines sheets from different packages to generate a more natural visual appearance.

The non-engraved surface (counterface): a lower quality veneer is used, but always of the same species as the veneer of the engraved surface. This badge is presented together in a book.

As wood is a natural product, **there will be variations in colour and structure**. It is not possible to ensure uniformity of colour between different production for natural wood veneers. Therefore, a slight difference between boards cannot be considered a defect and is due to the nature of the wood itself, which varies from log to log and even within the same log.

### **The installer is recommended:**

- Use the same production batch (package) per room.
- Before use, conduct a comparison between boards of the same or different thicknesses to check their shade.

All types of timber are sensitive to light and will change colour to give small differences as a result of direct or indirect exposure to light. Changes in surface colour over time are a natural characteristic of the product, not a defect.

**As a result of the embossing process, it is possible to generate:**

- Slight difference in shade between the original veneer before and after texturing.  
This difference can be increased by the final varnished or oiled finish on the faces of the board, as it will tend to highlight the possible contrasts typical of a natural veneer planked composition. This cannot be considered a defect.
- Slight cracks or crazing in the decorative veneer cannot be considered a defect but a characteristic of the product.

## Cutting and edging

---

To obtain a quality finish, a main saw and a scoring saw should always be used. The embossed side facing upwards so that **the saw should always strike the visible side of the board**. Pre-adjust the height of the disc so that it protrudes by about 15 mm.

The type of tools and the number of teeth also play an important role. The more teeth the better the quality of the cut, achieving better results on discs with alternate teeth. **We recommend that you cut at low feed rates.**

Edging can be carried out with conventional machines, although an **excess of edge must be maintained at all times to allow a finer manual adjustment** with the help of a sanding block or pad. This result will be optimal when using a 1 mm sheet edge.

This manual adjustment shall be made parallel to the grain of the wood.



## Finish

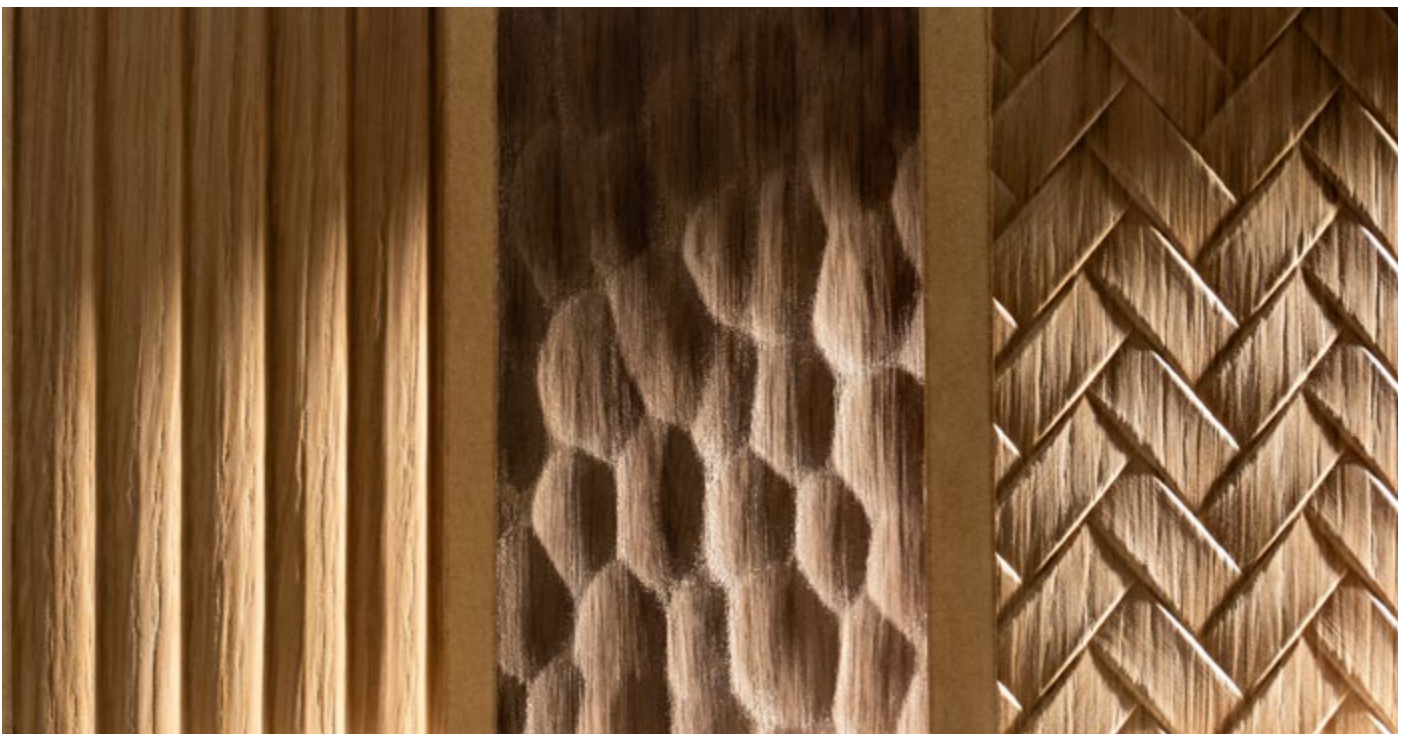
---

FibraPan® EZ Natur Tex is supplied unfinished, therefore the application of a surface treatment to protect the surface is recommended.

Due to the embossing process, **textured surfaces consume less varnish than a normal veneer.**

A diluted first coat is recommended so that it penetrates into the pore and sufficiently impregnates the wood grain. Afterwards, lightly sand the bottom with a Scotch pad; it is not necessary to use a sandpaper as it may damage the texture.

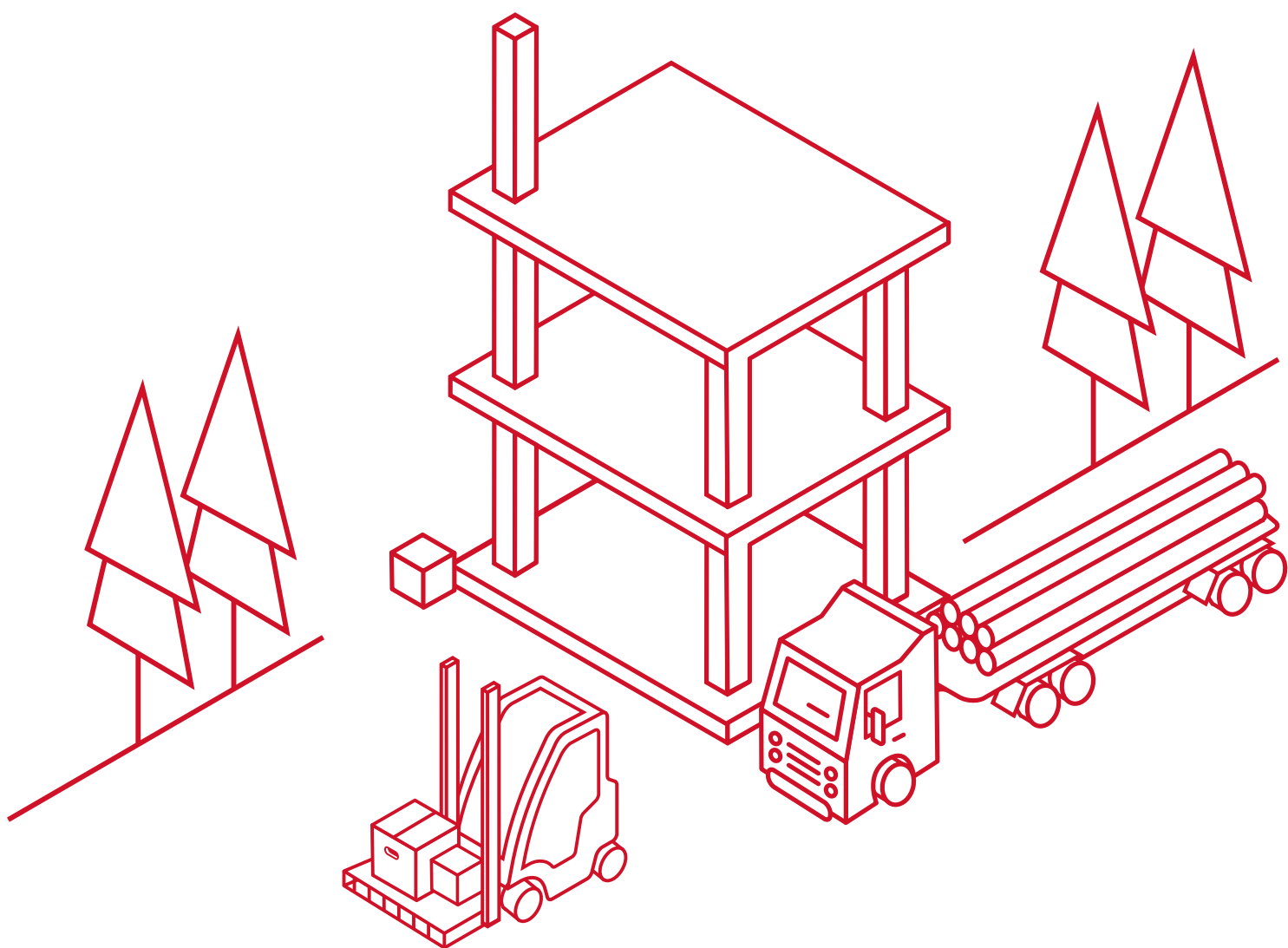
Afterwards, it is important to blow the textured surface with plenty of air to remove any sanding dust that may remain embedded in the reliefs, thus preventing it from coming to the surface once finished, especially on dark veneers. Finally, finish with the same varnish.







Scan the QR and access our full service programme









**Finsa**

finsa.com

Instagram icon | LinkedIn icon | Pinterest icon | Facebook icon | YouTube icon | X icon