

# Paged Mesh



The mark of responsible forestry

Paged Mesh is a hardwood plywood panel overlaid with durable phenolic film. It is an ideal panel for applications that require high wear resistance. The anti-slip finish is ideal for demanding applications in the transport, construction and events industries. The hard wearing coating also protects the plywood against moisture penetration. Paged Mesh, in addition to its great mechanical properties is also easy to clean and resistant to most commonly used chemicals.

### KEY BENEFITS AND APPLICATIONS

- Main application areas include: flooring and panelling of trailers and commercial vehicles, container flooring, scene and tent flooring, scaffolding and warehousing shelving
- High anti-slip index
- High durability and crack resistance
- Made from responsibly sourced wood in Poland

### STANDARD SIZES\* [mm]

1250x2500/3000  
1500x2500/3000/3300

\*Other formats available on request

### DIMENSIONAL DEVIATION AS PER EN 315 & EN 324

Length/Width	Deviation
< 1000 mm	± 1 mm
1000 – 2000 mm	± 2 mm
> 2000 mm	± 3 mm

### STRAIGHTNESS AND SQUARENESS DEVIATION AS PER EN 315 & EN 324

	Deviation
Straightness	± 0,1% or ± 1mm/m
Squareness	± 0,1% or ± 1mm/m

### NOMINAL THICKNESS WITH STANDARD DEVIATION, NUMBER OF PLYS, DENSITY AS PER EN 315, EN 323 & EN 324

Nominal Thickness (mm)*	Number of plies (pcs)	Standard Deviation (mm)		Weight (kg/m <sup>2</sup> )	Density avg. (kg/m <sup>3</sup> )
6,5***	5	-0,6	+0,4	4,5	640-760**
9	7	-0,7	+0,5	6,3	
12	9	-0,8	+0,6	8,4	
15	11	-0,9	+0,7	10,5	
18	13	-0,9	+0,7	12,6	
21	15	-1,0	+0,8	14,7	
24	17	-1,1	+0,9	16,8	
27	19	-1,8	+1,4	18,9	
30	21	-1,9	+1,5	21	
35	25	-1,5	+1,1	24,5	
40	27	-1,6	+1,2	28	

\*Other thicknesses available upon request

\*\*As measured at 8-12% moisture content

\*\*\*Only for 1250x2500mm

### COATING

Film type	Phenolic
Thickness	145 / 167 / 220 g/m <sup>2</sup>
Colour	Black, black brown
Taber Abraser	400 / 480 / 600 (no. of cycles)
Rolling Test	1800 ± 35%
Anti-slip index	R10

### RELEASE OF FORMALDEHYDE (EN 717-1)

½ E1

### BONDING QUALITY (EN 314-2)

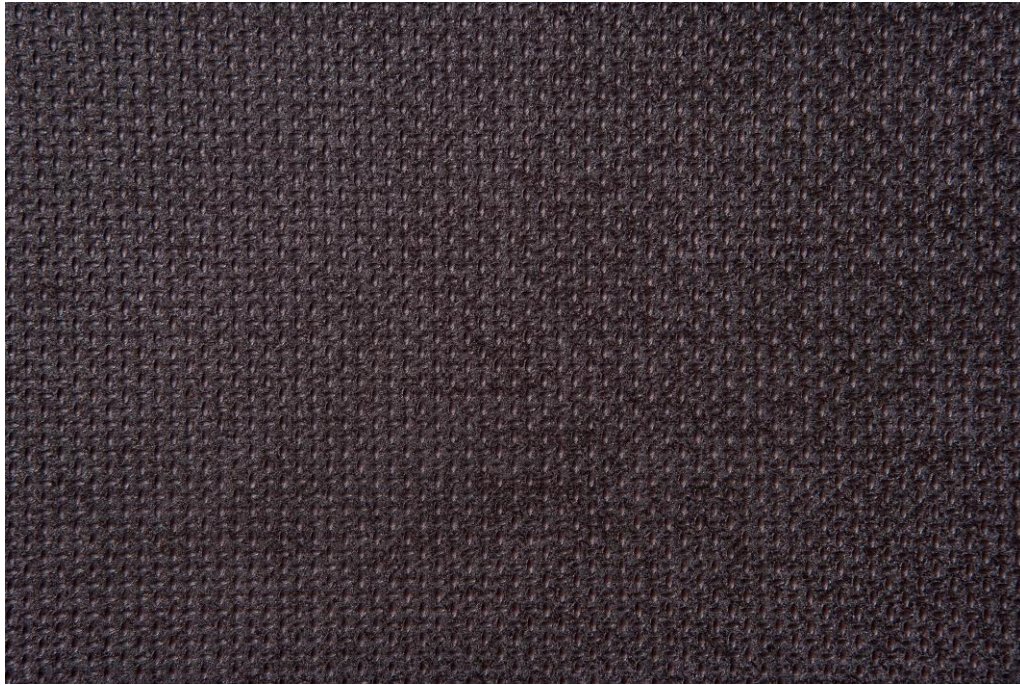
Class 3

### MACHINING

Edge machining, CNC machining and drilling on request

### ADDITIONAL INFORMATION

1. General Terms of Sales available from [www.sklejkapaged.pl](http://www.sklejkapaged.pl)
2. Declaration of Performance available from [www.sklejkapaged.pl](http://www.sklejkapaged.pl)
3. Film-faced plywood in-house norms and standards available from [www.sklejkapaged.pl](http://www.sklejkapaged.pl)
4. Surface coating types: M/F, M/M.



Our product is made of renewable resource. Our products are characterized by low carbon footprint and are produced from certified wood, thus respecting the natural environment and the local community. The information contained in this document is intended as a guideline only and comes without warranty. We reserve the right to amend product specification sheets without notice.