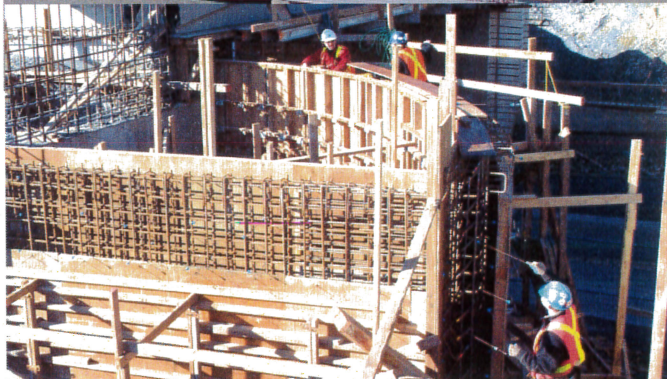




Richmond Plywood Corporation Limited

# COASTFORM®

Richmond Plywood Corporation Limited (Richply) has available a 17.5mm 7-ply specialty overlaid concrete-form, oil and edge-sealed panel, COASTFORM.



## BENEFITS

1. **COASTFORM** is a high quality-forming panel, suitable for applications where the higher design values of **ULTRAFORM**, Richply's premium forming panel, are not required. Design values and procedures are found in Appendix E of the Concrete Society - *Formwork: A Guide to Good Practice*. The panel is certified by APA.
2. Easy to use and maintain. Surfaces are treated with Nox-Crete release agent that protects the surface while reducing form damage and eases striking effort.
3. Design with confidence. Richply supplies the pre-calculated allowable pressures for concrete forming applications.
4. Re-usable: **COASTFORM's** strength and stiffness, impact resistance, tough overlaid surface, quality edge seal and EXTERIOR glue bond allow for multiple re-uses.
5. Plies are bonded with waterproof phenolic resin. Glueline is EXTERIOR GRADE and exceeds the bond requirements of EN 636-3S (replaces WBP rating).

## PRODUCT SPECIFICATION

As a member of the APA, all plywood manufactured by Richply is subjected to APA's stringent quality control procedures.

## RELEASE AGENT

Each panel is treated with Nox-Crete release agent. This inhibits moisture penetration into the panel as well as acts to improve the release of the panel from the concrete. Nox-Crete helps to eliminate concrete build-up and dusting and aids in ease of stripping.

## CONSTRUCTION, DIMENSIONS & PACKAGING

**COASTFORM** panels are 7-ply construction of selected softwood veneers.

Phenolic resin overlays on one or both sides maximize re-use potential.

Factory edges are painted silver with water and alkali resistant edge sealant.

Factory applied Nox-Crete release agent on panel faces and backs.

Sizes: 4 x 8 foot (1220 x 2440 mm) standard dimension

**Thicknesses:** 17.5mm

**Packaging:** 50 panels/unit (17.5mm)

Other thicknesses and sizes or overlays on two sides are available on special order.



## CARE AND HANDLING

To achieve COASTFORM's full re-use potential, the following procedures are recommended.

## STORAGE

Panels should be stored on a dry, level platform under shelter or otherwise protected. Steel straps should be cut and the forming surface of the top panel covered. Prolonged exposure to direct sunlight may cause degradation.

## CONCRETE PLACEMENT

Use rubber-tipped vibrators for consolidation. Vibrators should not be used to move concrete horizontally in forms. As well, rate of pour and slump factor must be limited to that assumed in the design of the form.

## CLEANING AND TREATMENT

Coat panels with Nox-Crete or an equivalent quality chemically active release agent before initial use and subsequent uses. This will simplify stripping and cleaning, lengthen form life and improve concrete appearance. Coatings such as diesel fuel, barrier release agents or crankcase oil are not recommended as they may damage the MDO face. Use wooden wedges if aids for stripping are required. Using metal implements will cause perimeter damage. Clean panels immediately after stripping using non-abrasive tools such as brushes and plastic or wooden scrapers.

## FORM CONSTRUCTION

Carbide-tipped blades are recommended. Cut or exposed edges must be resealed with water and alkali resistant edge sealant or paint to prevent moisture absorption and minimize swelling. Panels should be fixed to framing supports with screws. Screws can be countersunk and filled to maintain concrete appearance. Reduce joint leakage by filling joints with a suitable tape or expandable caulk.

Avoid chipping or denting panel surface and damage to panel edges during handling.

## RICHPLY HISTORY

Richply has been producing high quality plywood products since its inception in 1956 and is British Columbia's largest manufacturer of softwood plywood.

## ENVIRONMENTAL COMMITMENT

Richply is committed to sustainable forestry and reforestation and is in full compliance with all government forest practices regulations, including the Forest Practices Code of British Columbia Act.

Richply is certified under **PEFC Chain of Custody of Forest Based Products – Requirements.**



## LOAD SPAN DATA

The table below gives allowable loads for various spans and plywood thicknesses. These loads were calculated using the procedures given in the Canadian Plywood Association publication for *Concrete Formwork* (1996).

The values given are for plywood spanning continuously across four or more supports, with face grain perpendicular to supports.

While every precaution has been taken to ensure that all the information contained in this publication is accurate, Richply assumes no responsibility for any errors or oversights in the use of it or in the preparation of designs based on it or for any work based on it.

## OVERLAID PLYWOOD SPAN TABLE

Minimum Width of Support (mm)	Centre to Centre Span (mm)	Allowable Concrete Pressure (kN/m <sup>2</sup> ) for the indicated deflection limits		
		L/180	L/270	L/360
50	100	206	206	206
	200	69	69	69
	300	41	41	38
	400	29	26	20
	500	21	15	11
	600	14	9.3	7.0
	800	6.3	4.2	3.1

75	100	412	412	412
	200	82	82	82
	300	46	46	46
	400	32	32	24
	500	21	18	14
	600	15	11	8.2
	800	7.1	4.7	3.5

The Concrete Society publication *Formwork: A Guide to Good Practice* contains COASTFORM permissible stress values in Appendix E, and gives detailed guidance on their use in UK concrete form design.

## RICHPLY GUARANTEE

COASTFORM is guaranteed against delamination of either inner ply or overlay surface, and against manufacturing defects for the life of the panel. If failure occurs, Richply will reimburse the CIF purchase price of the material or, at its option, replace the defective panel(s).

## Distributed by:



Premier Forest Products Ltd

West Way Road  
Alexandra Dock  
Newport NP20 2PQ

Nov 2014